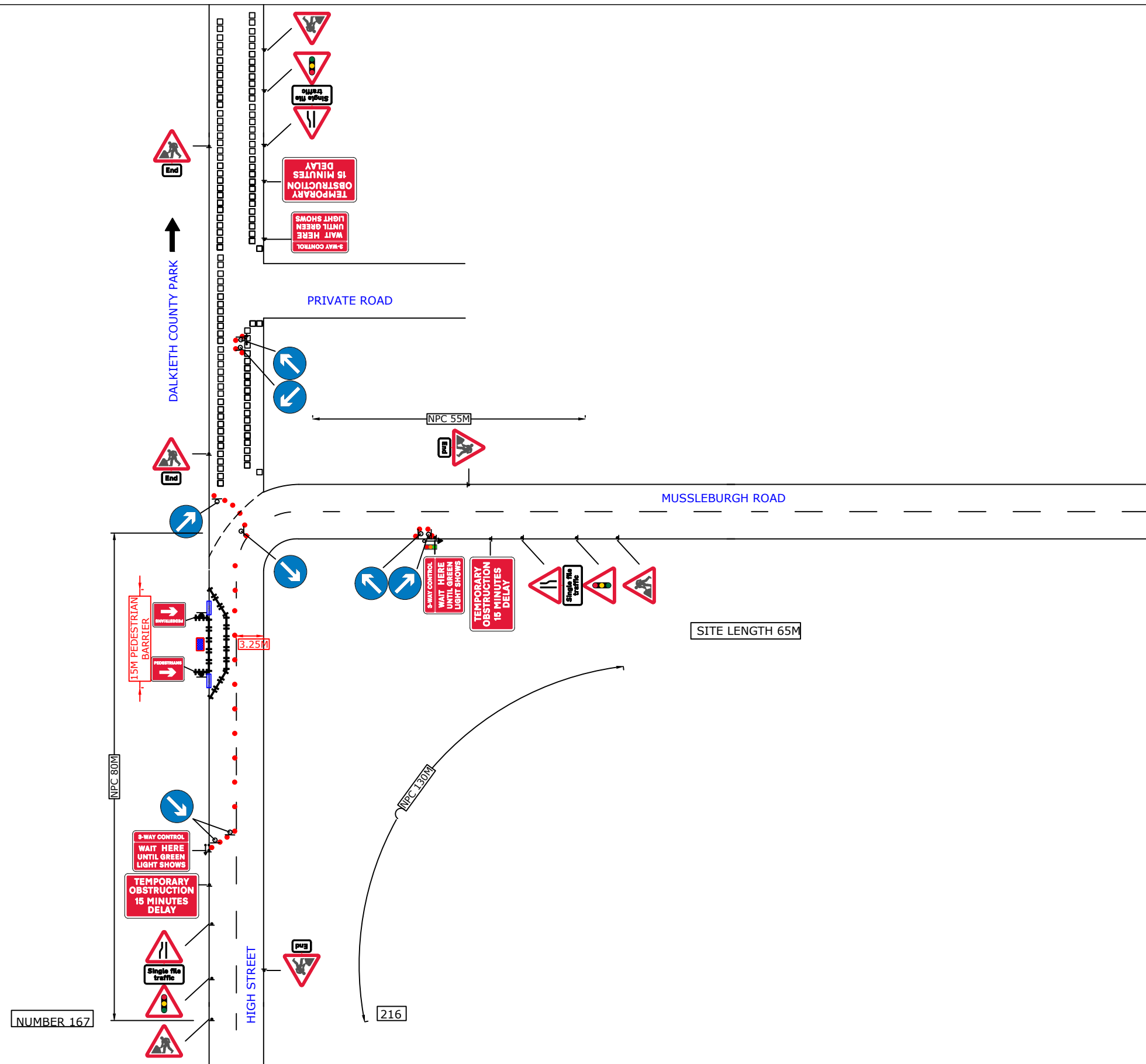


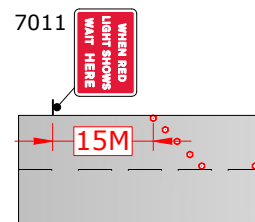
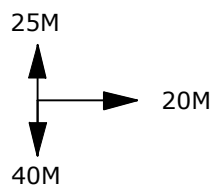
Contract No	202-S004801
Date	11/03/2024
Drawn by	BW/878
Approved By	202
Purpose of works	TELECOM WORKS
Version Number	01
Amended by	XXXXXXXXXX
Amendment Date	XXXXXXXXXX
Scale	NOT TO SCALE
Sheet No	1 of 1
SPEED OF ROAD	MPH 30
DISTANCE FROM FIRST SIGN TO START OF SITE(D)	MIN 20M MAX 45M
SIDEWAYS SAFETY ZONE (S)	0.5M
LONGWAYS CLEARANCE (L)	0.5M
END OF WORKS (E)	10M TO 30M
OS Licence No	OI - 0000000000



KEY

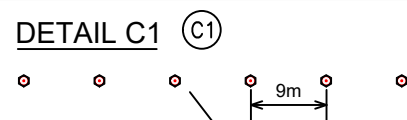
- Traffic sign
- Traffic cone
- No Parking cone
- Temp Traffic signals
- Temp Ped Crossing
- Working Space
- Controlled area
- Pedestrian Barrier
- Perm signal head
- Bus Stop

PHASE 1		PHASE 2	
R	05	R	05
G	35	G	35
PHASE 3			
R	05		
G	35		



Note:

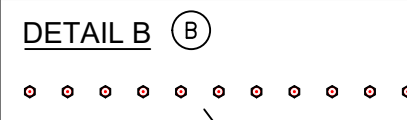
- This distance may have to be increased in some cases to allow larger vehicles to pass the works.
- Sign ref 7011 variants to be used for multiphase & pedestrian traffic signals.



Single/Dual carriageway 40mph or less - 750mm traffic cones.
 Single/Dual carriageway 50mph or more - 750mm traffic cones.

Notes:

- During darkness, warning lights to BS EN 12352:2006 should be provided in accordance with Table A1.3 (Appendix 1).
- For relaxation to Detail C1 see Table A1.3 (Appendix 1).



Single/Dual carriageway 50mph or more - 750mm traffic cones, spacing 1.5m.
 Dual carriageway national speed limit - 750mm traffic cones, spacing 1.5m, relaxation 3m.

Notes:

- During darkness, warning lights to BS EN 12352:2006 should be provided in accordance with Table A1.3 (Appendix 1).
- 45° tapers have 1.2m spacing, no relaxations.
- On motorways and NSL AP duals with hard shoulders, 1m cones will be required for both standard and relaxation works for lead tapers and the facing wall of lane changes.

The information in this drawing may not be copied or used by third parties without written consent from Sunbelt Rentals Ltd (Traffic Management). This layout is for installation by NRSWA, Lantra 12A,12B,12C,12D qualified persons.
All works shall be in accordance with Safety at Street Works and Road Works, A Code of Practice 2013 & Chapter 8

THIS DOCUMENT IS UNCONTROLLED WHEN PRINTED

The electronic version of this document is the approved and most current. Any printed version is uncontrolled and may not be current.